

PIPELINE ISOLATION & RECOVERY

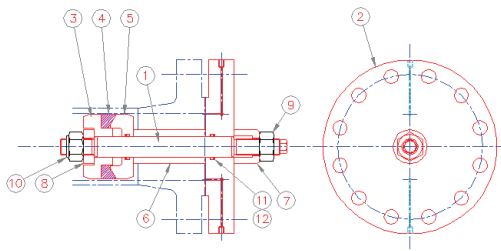
Damor Engineering Ltd has a wealth of experience in the design of specialist equipment for pipeline isolation, recovery and pigging operations.

We can engineer solutions to your pipeline isolation requirements, using either simple compression or more complex pipe gripping tools depending upon the pipeline construction and operating pressure.

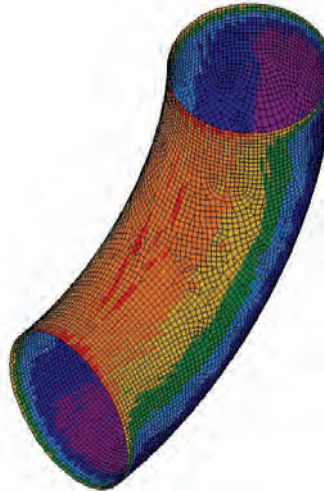
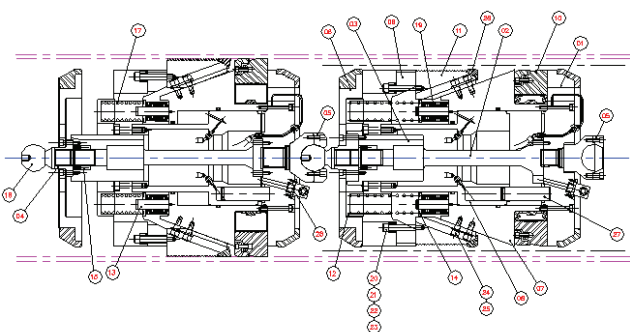
Usually, pipeline isolation or recovery is carried out using tools that fit internally into the pipe and expand to provide the grip or seal. However, for specialist applications, e.g. where the pipe may be internally coated and easily damaged, we have also designed tools to grip and seal on the external surface of an open pipe end.

All gripping-type tools are designed to be self-energising under the applied pressure or pulling load. As the load on the tool is increased, the gripping force on the pipeline tightens to ensure safe operations.

Damor Engineering Ltd also designs both Flange Weld and Internal Joint testing tools, to allow hydrostatic pressure testing of new welds between pipeline spools and / or flanges. Tools can be configured to suit any flange type and pressure classification, and with a choice of either manual or hydraulic actuation.



We have designed extremely sophisticated specialist tools for remote isolation and / or recovery of large diameter pipes.



Damor Engineering Ltd

Evans Business Centre
Durham Way South
Aycliffe Industrial Park
NEWTON AYCLIFFE
DL5 6XP
United Kingdom

Tel +44 (0) 1325 328867
email sales@damor.co.uk

www.damor.co.uk

MECHANICAL



MATERIALS
HANDLING



MARINE



OFFSHORE



SUBSEA



ENERGY



AUTOMOTIVE



CHEMICAL



PHARMACEUTICAL



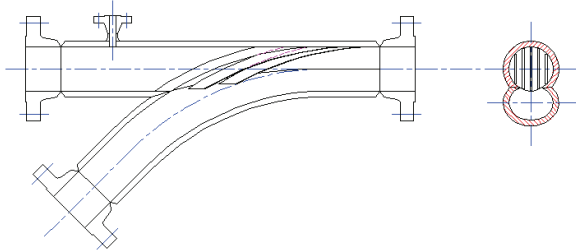
METALS & MINING



ENVIRONMENTAL



Damor Engineering Ltd offers a complete consultancy service and can provide advice and recommendations for isolation, recovery and pigging of all types and sizes of pipeline.



We design pig launchers, receivers, branches, tees, closures and accessories to ANSI B31.3, PD5500, ASME VIII and other pipeline and pressure vessel codes, as required.

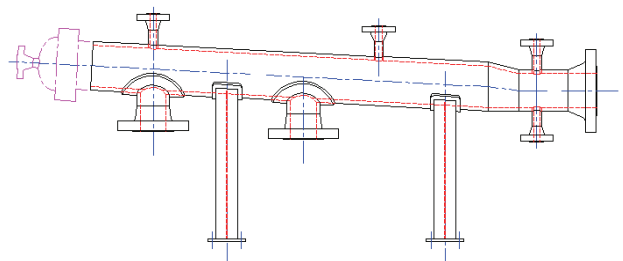
We can design piggable branches from either forgings or fabricated pipe sections. Fabrication of tees and branches can greatly reduce lead times for manufacture and delivery when

compared to forgings, but must be very carefully engineered to remain code-compliant. To ensure the structural integrity of all manufactured equipment, **Damor Engineering Ltd** utilises the latest Finite Element Analysis software to predict stress levels and deflections.

For all equipment, we can provide you with full detail and assembly drawing packages for manufacture in your own workshops or by your chosen sub-contractor. We can provide build support and commissioning assistance, in your workshops and / or on-site.

Alternatively, **Damor Engineering Ltd** offers a complete Design & Build service, in conjunction with experienced local fabricators and machinists with whom we have a close association. All assembled equipment is fully function and pressure tested before despatch.

We have designed isolation, recovery and other specialist equipment for most of the major UK pipeline pig producers.



Additionally, we have designed and supplied a variety of construction tools and aids for the erection of pipelines, including lifting beams and pulling clamps, for both onshore and subsea operations.



Damor Engineering Ltd operates its own Quality Assurance system based on the requirements of BS EN ISO 9001 : 2000.

Details of many of our previous projects can be seen on our website, at www.damor.co.uk.

To find out more about us, and how we can fulfil all of your engineering requirements for pipeline pigging, isolation and recovery, please contact **Damor Engineering Ltd** by phone or e-mail.